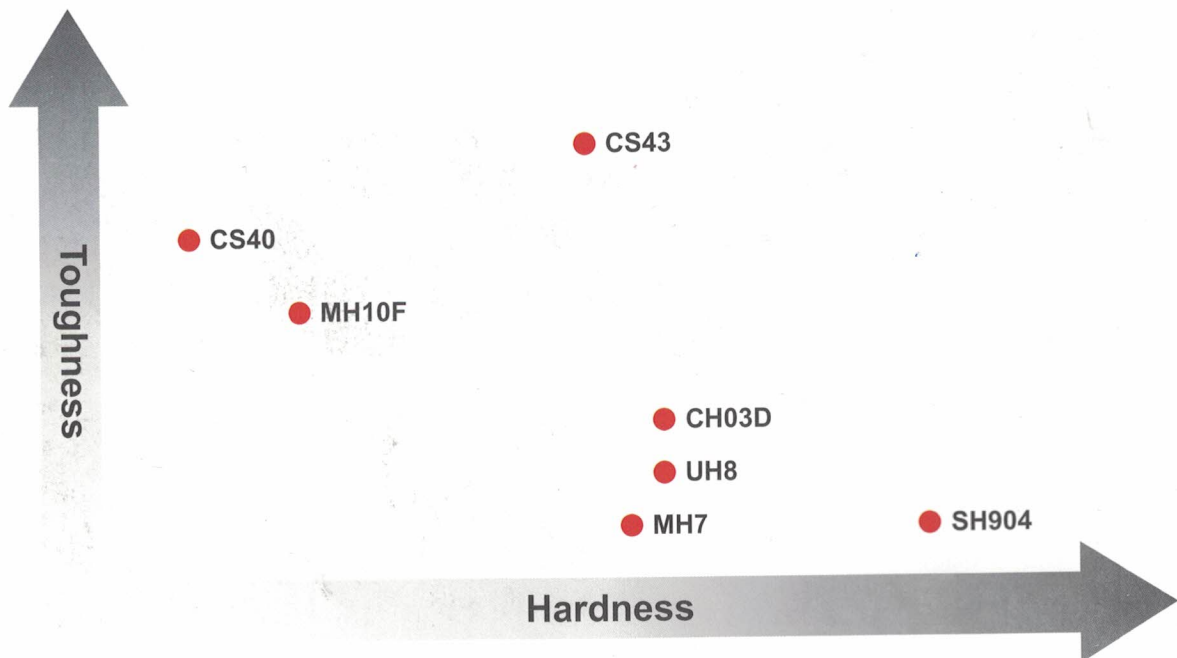


Grade Chart Of Carbide Rods

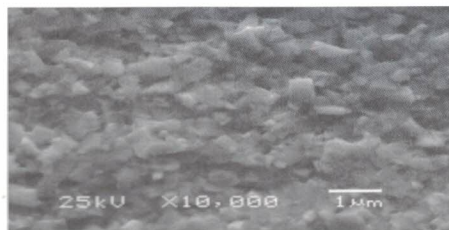
Grades	Binder %	Hardness		T.R.S	Density	K _{IC}
		HRA	HV10	≥N/mm ²	g/cm ³	MPa*m ^{1/2}
MH10F	10	91.8	1600	3800	14.45	11.0
CS43	12	92.5	1720	4500	14.20	11.0
CS40	12	91.5	1560	4000	14.15	13.0
SH904	9	94.0	2040	4000	14.45	8.5
UH8	8	93.2	1860	3300	14.60	9.0
MH7	6	93.1	1850	3600	14.85	8.5
CH03D	3	93.2	1860	1800	15.25	9.5

● Above data are typical parameters.



Grain Size	ISO Code	Application
Submicron	K30	An excellent universal grade to cover most of the cutting applications for materials of ISO P, M, K, N.
Ultrafine	K40	High toughness, high wear resistance, fit for ISO P, M, S, H. finishing.
Submicron	K40	Fit for roughing and machining under extreme conditions/environments.
Superfine	K30	Made of superfine grain size 0.3~0.4 μm , high wear resistance and impact strength for meeting the most critical cutting challenges in composite materials including CFRP, graphite and hardened steels > 60 HRC.
Ultrafine	K20	Ultrafine carbide grade with high hardness suitable for machining hardened materials (50-60HRC) and high performance machining of non-ferrous metals such as aluminum.
Submicron	K10	A grade with high wear resistance for machining aluminum alloys, graphite, composite materials. Suitable for diamond coating.
Fine	K05	High performance grade for diamond coated tools, which is used for machining graphite, composite materials, CFRP.

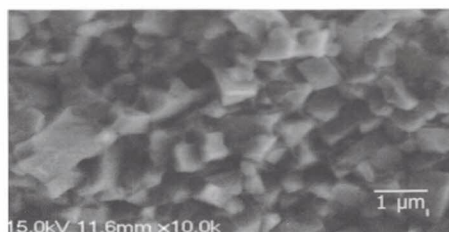
Microstructure SEM 10,000 X



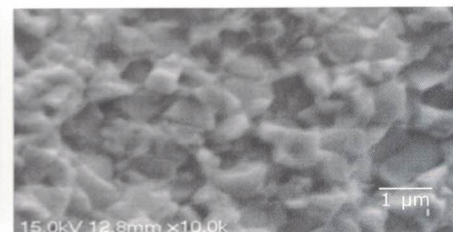
Superfine 0.2~0.4 micron



Ultrafine 0.4~0.6 micron



Submicron 0.6~0.8 micron



Fine 1.0 micron

Application Recommendation

Cutting Style		MH10F	CS43
	Drilling	✓	
Milling	Roughing	✓	
	Finishing	✓	✓
	Reaming		
	Hobbing	✓	✓

ISO Workpiece Material	Typical Materials	MH10F	CS43
P	Carbon Steel	★	★
	Alloy Steel (HRC<45)	★	★
M	Stainless Steel	★	★
K	Cast Iron	★	
S	Titanium Alloy	☆	★
	Nickel Base Alloy	☆	☆
H	Tempered steel (HRC50-58)		★
	Hardened Steel (HRC>58)		
N	Aluminum Alloys	★	
Others	Graphite		
	Composite Material		
Diamond Coating			

● CS40* Recommended Grade for Roughing, and machining under Extreme conditions/environments.

★ First Choice ☆ Second Choice

D: Diamond coating needed

CS40*	SH904	UH8	MH7	CH03D
✓				
	✓	✓	✓ _D	✓ _D
		✓	✓	
		✓		

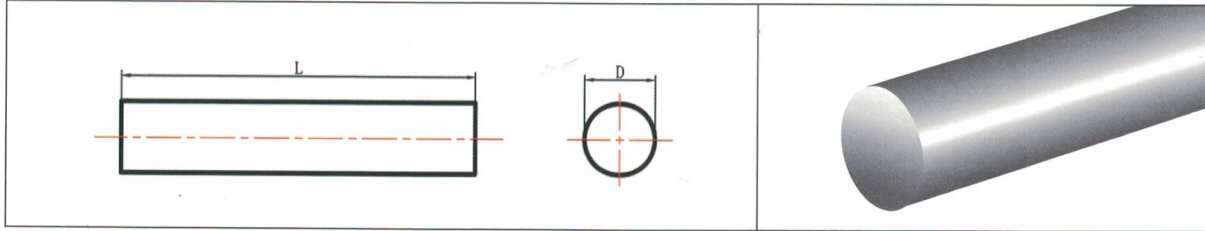
CS40*	SH904	UH8	MH7	CH03D
☆				
☆				
		☆	★	
★				
☆				
	☆	★		
	★	☆		
		★	☆	
	★	★	★ _D	★ _D
	★	★	★ _D	★ _D
			★ _D	★ _D



Engineered Solutions for Demanding Applications



Precision Ground Rod, Random Lengths



Type: RSM
Metric Sizes 1mm to 16mm Diameter
h6 tolerance

Item No.	OD	Tol. h6	L	Tol.
	(mm)	(mm)	(mm)	(mm)
RSM-0100-3300PG	1	0/-0.006	330	0/+5
RSM-0150-3300PG	1.5	0/-0.006	330	0/+5
RSM-0200-3300PG	2	0/-0.006	330	0/+5
RSM-0300-3300PG	3	0/-0.006	330	0/+5
RSM-0400-3300PG	4	0/-0.008	330	0/+5
RSM-0500-3300PG	5	0/-0.008	330	0/+5
RSM-0600-3300PG	6	0/-0.008	330	0/+5
RSM-0700-3300PG	7	0/-0.009	330	0/+5
RSM-0800-3300PG	8	0/-0.009	330	0/+5
RSM-0900-3300PG	9	0/-0.009	330	0/+5
RSM-1000-3300PG	10	0/-0.009	330	0/+5
RSM-1100-3300PG	11	0/-0.011	330	0/+5
RSM-1200-3300PG	12	0/-0.011	330	0/+5
RSM-1300-3300PG	13	0/-0.011	330	0/+5
RSM-1400-3300PG	14	0/-0.011	330	0/+5
RSM-1500-3300PG	15	0/-0.011	330	0/+5
RSM-1600-3300PG	16	0/-0.011	330	0/+5

● Above data are typical parameters.

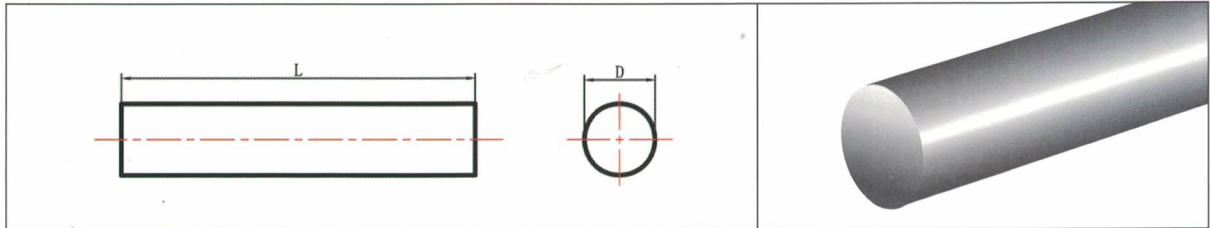
Available Grade

MH10F	UH8	MH7	SH904	CS40	CS43
<input checked="" type="checkbox"/>	<input type="checkbox"/>	<input type="checkbox"/>	<input type="checkbox"/>	<input type="checkbox"/>	<input type="checkbox"/>

● Please contact with us for more specifications.

■ In Stock □ Check inventory

Precision Ground Rod, Random Lengths



Type: RSM
Metric Sizes 17mm to 40mm Diameter
h6 tolerance

Item No.	OD	Tol. h6	L	Tol.
	(mm)	(mm)	(mm)	(mm)
RSM-1700-3300PG	17	0/-0.011	330	0/+5
RSM-1800-3300PG	18	0/-0.011	330	0/+5
RSM-1900-3300PG	19	0/-0.013	330	0/+5
RSM-2000-3300PG	20	0/-0.013	330	0/+5
RSM-2100-3300PG	21	0/-0.013	330	0/+5
RSM-2200-3300PG	22	0/-0.013	330	0/+5
RSM-2300-3300PG	23	0/-0.013	330	0/+5
RSM-2400-3300PG	24	0/-0.013	330	0/+5
RSM-2500-3300PG	25	0/-0.013	330	0/+5
RSM-2600-3300PG	26	0/-0.013	330	0/+5
RSM-2700-3300PG	27	0/-0.013	330	0/+5
RSM-2800-3300PG	28	0/-0.013	330	0/+5
RSM-2900-3300PG	29	0/-0.013	330	0/+5
RSM-3000-3300PG	30	0/-0.013	330	0/+5
RSM-3200-3300PG	32	0/-0.016	330	0/+5
RSM-3400-3300PG	34	0/-0.016	330	0/+5
RSM-3600-3300PG	36	0/-0.016	330	0/+5
RSM-3800-3300PG	38	0/-0.016	330	0/+5
RSM-4000-3300PG	40	0/-0.016	330	0/+5

● Above data are typical parameters.

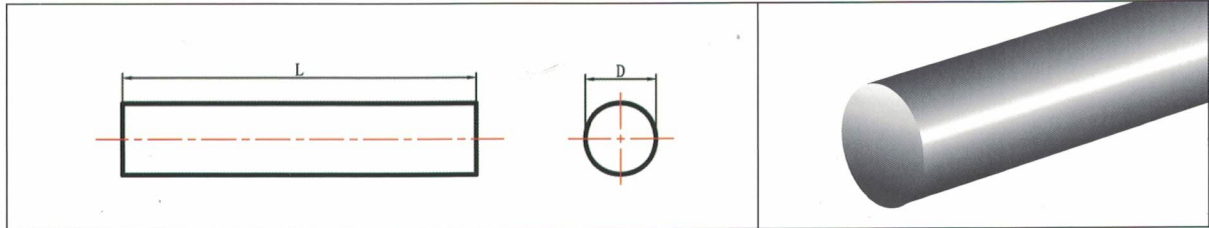
Available Grade

MH10F	UH8	MH7	SH904	CS40	CS43
<input checked="" type="checkbox"/>	<input type="checkbox"/>	<input type="checkbox"/>	<input type="checkbox"/>	<input type="checkbox"/>	<input type="checkbox"/>

● Please contact with us for more specifications.

■ In Stock □ Check inventory

Unground Rod, Random Lengths



Type: RSM
Metric Sizes 1mm to 16mm Diameter

Item No.	OD	Tol.	L	Tol.
	(mm)	(mm)	(mm)	(mm)
RSM-0120-3300UG	1.2	+0.05/+0.3	330	0/+5
RSM-0170-3300UG	1.7	+0.05/+0.3	330	0/+5
RSM-0220-3300UG	2.2	+0.05/+0.3	330	0/+5
RSM-0320-3300UG	3.2	+0.05/+0.3	330	0/+5
RSM-0420-3300UG	4.2	+0.05/+0.3	330	0/+5
RSM-0520-3300UG	5.2	+0.05/+0.3	330	0/+5
RSM-0620-3300UG	6.2	+0.05/+0.3	330	0/+5
RSM-0720-3300UG	7.2	+0.05/+0.3	330	0/+5
RSM-0820-3300UG	8.2	+0.05/+0.3	330	0/+5
RSM-0920-3300UG	9.2	+0.05/+0.3	330	0/+5
RSM-1020-3300UG	10.2	+0.05/+0.3	330	0/+5
RSM-1120-3300UG	11.2	+0.05/+0.3	330	0/+5
RSM-1220-3300UG	12.2	+0.05/+0.3	330	0/+5
RSM-1320-3300UG	13.2	+0.05/+0.3	330	0/+5
RSM-1420-3300UG	14.2	+0.05/+0.3	330	0/+5
RSM-1520-3300UG	15.2	+0.05/+0.3	330	0/+5
RSM-1620-3300UG	16.2	+0.05/+0.3	330	0/+5

● Above data are typical parameters.

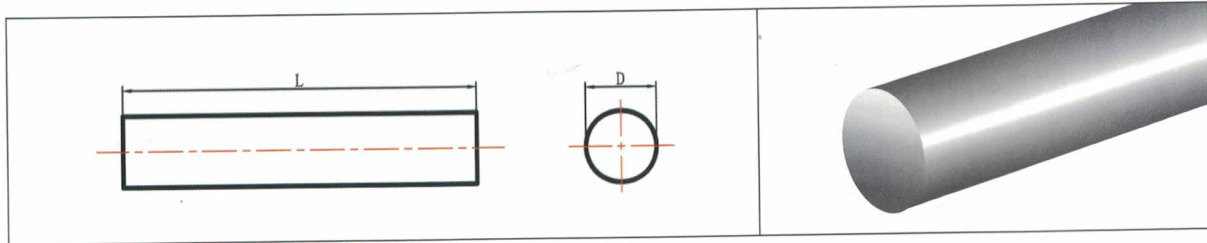
Available Grade

MH10F	UH8	MH7	SH904	CS40	CS43
<input checked="" type="checkbox"/>	<input type="checkbox"/>	<input type="checkbox"/>	<input type="checkbox"/>	<input type="checkbox"/>	<input type="checkbox"/>

● Please contact with us for more specifications.

■ In Stock □ Check inventory

Unground Rod, Random Lengths



Type: RSM
Metric Sizes 17mm to 40mm Diameter

Item No.	OD	Tol.	L	Tol.
	(mm)	(mm)	(mm)	(mm)
RSM-1720-3300UG	17.2	+0.05/+0.4	330	0/+5
RSM-1820-3300UG	18.2	+0.05/+0.4	330	0/+5
RSM-1920-3300UG	19.2	+0.05/+0.4	330	0/+5
RSM-2020-3300UG	20.2	+0.05/+0.4	330	0/+5
RSM-2120-3300UG	21.2	+0.05/+0.5	330	0/+5
RSM-2220-3300UG	22.2	+0.05/+0.5	330	0/+5
RSM-2320-3300UG	23.2	+0.05/+0.5	330	0/+5
RSM-2420-3300UG	24.2	+0.05/+0.5	330	0/+5
RSM-2520-3300UG	25.2	+0.05/+0.5	330	0/+5
RSM-2620-3300UG	26.2	+0.05/+0.5	330	0/+5
RSM-2720-3300UG	27.2	+0.05/+0.5	330	0/+5
RSM-2820-3300UG	28.2	+0.05/+0.5	330	0/+5
RSM-2920-3300UG	29.2	+0.05/+0.5	330	0/+5
RSM-3020-3300UG	30.2	+0.05/+0.5	330	0/+5
RSM-3220-3300UG	32.2	+0.05/+0.6	330	0/+5
RSM-3420-3300UG	34.2	+0.05/+0.6	330	0/+5
RSM-3620-3300UG	36.2	+0.05/+0.6	330	0/+5
RSM-3820-3300UG	38.2	+0.05/+0.6	330	0/+5
RSM-4020-3300UG	40.2	+0.05/+0.7	330	0/+5

● Above data are typical parameters.

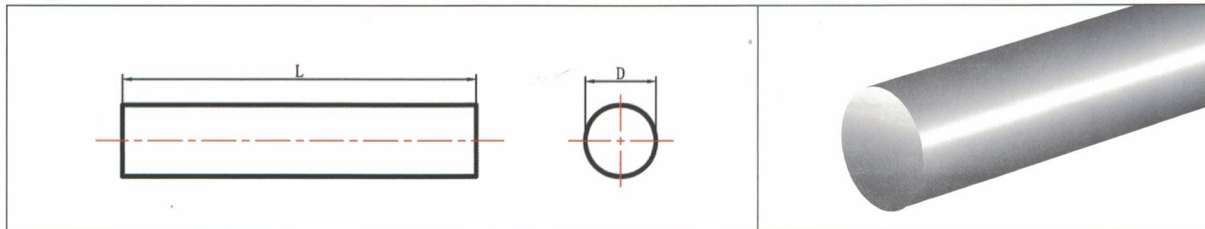
Available Grade

MH10F	UH8	MH7	SH904	CS40	CS43
<input checked="" type="checkbox"/>	<input type="checkbox"/>	<input type="checkbox"/>	<input type="checkbox"/>	<input type="checkbox"/>	<input type="checkbox"/>

● Please contact with us for more specifications.

■ In Stock □ Check inventory

Precision Ground Rod, Random Lengths



Type: RSI
Inch Sizes 1/8" to 1-1/4" Diameter
h6 tolerance

Item No.	OD		Tol. h6	L	Tol.
	(inch)		(inch)	(inch)	(inch)
RSI-01250-1300DG	0.125	1/8	0/-0.00031	13	0/+0.25
RSI-01406-1300DG	0.140625	9/64	0/-0.00031	13	0/+0.25
RSI-01563-1300DG	0.15625	5/32	0/-0.00031	13	0/+0.25
RSI-01719-1300DG	0.171875	11/64	0/-0.00031	13	0/+0.25
RSI-01875-1300DG	0.1875	3/16	0/-0.00031	13	0/+0.25
RSI-02031-1300DG	0.203125	13/64	0/-0.00031	13	0/+0.25
RSI-02188-1300DG	0.21875	7/32	0/-0.00031	13	0/+0.25
RSI-02500-1300DG	0.25	1/4	0/-0.00035	13	0/+0.25
RSI-03125-1300DG	0.3125	5/16	0/-0.00035	13	0/+0.25
RSI-03750-1300DG	0.375	3/8	0/-0.00035	13	0/+0.25
RSI-04375-1300DG	0.4375	7/16	0/-0.00043	13	0/+0.25
RSI-04688-1300DG	0.46875	15/32	0/-0.00043	13	0/+0.25
RSI-05000-1300DG	0.5	1/2	0/-0.00043	13	0/+0.25
RSI-05625-1300DG	0.5625	9/16	0/-0.00043	13	0/+0.25
RSI-06250-1300DG	0.625	5/8	0/-0.00043	13	0/+0.25
RSI-07500-1300DG	0.75	3/4	0/-0.00051	13	0/+0.25
RSI-08750-1300DG	0.875	7/8	0/-0.00051	13	0/+0.25
RSI-10000-1300DG	1	1	0/-0.00051	13	0/+0.25
RSI-11250-1300DG	1.125	1 1/8	0/-0.00051	13	0/+0.25
RSI-12500-1300DG	1.25	1 1/4	0/-0.00063	13	0/+0.25

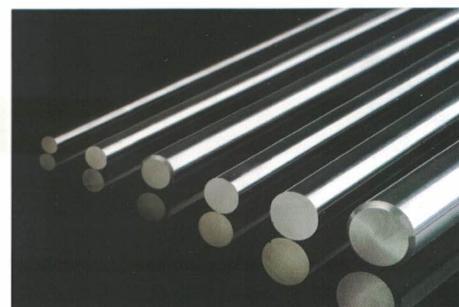
● Above data are typical parameters.

Available Grade

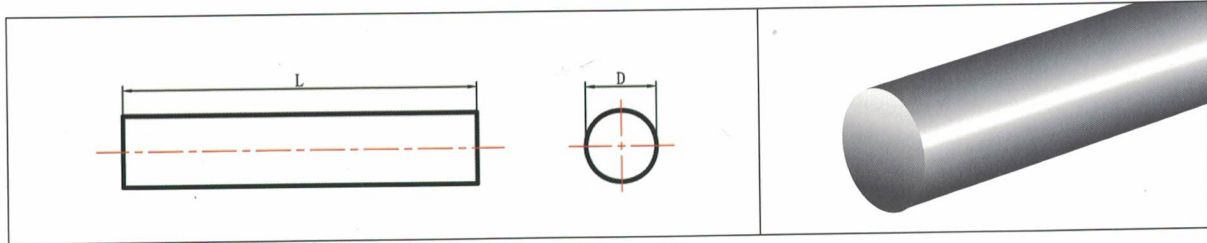
MH10F	UH8	MH7	SH904	CS40	CS43
<input checked="" type="checkbox"/>	<input type="checkbox"/>	<input type="checkbox"/>	<input type="checkbox"/>	<input type="checkbox"/>	<input type="checkbox"/>

● Please contact with us for more specifications.

■ In Stock □ Check inventory



Unground Rod, Random Lengths



Type: RSI
Inch Sizes 1/16" to 11/32" Diameter

Item No.	OD		Tol.	L	Tol.
	(inch)		(inch)	(inch)	(inch)
RSI-00625-1300UG	0.0625	1/16	+0.012/+0.02	13	0/+0.25
RSI-00781-1300UG	0.078125	5/64	+0.012/+0.02	13	0/+0.25
RSI-00938-1300UG	0.09375	3/32	+0.012/+0.02	13	0/+0.25
RSI-01094-1300UG	0.109375	7/64	+0.012/+0.02	13	0/+0.25
RSI-01250-1300UG	0.125	1/8	+0.012/+0.02	13	0/+0.25
RSI-01406-1300UG	0.140625	9/64	+0.012/+0.02	13	0/+0.25
RSI-01563-1300UG	0.15625	5/32	+0.012/+0.02	13	0/+0.25
RSI-01719-1300UG	0.171875	11/64	+0.012/+0.02	13	0/+0.25
RSI-01875-1300UG	0.1875	3/16	+0.012/+0.02	13	0/+0.25
RSI-02031-1300UG	0.203125	13/64	+0.012/+0.02	13	0/+0.25
RSI-02188-1300UG	0.21875	7/32	+0.012/+0.02	13	0/+0.25
RSI-02344-1300UG	0.234375	15/64	+0.012/+0.02	13	0/+0.25
RSI-02500-1300UG	0.25	1/4	+0.012/+0.02	13	0/+0.25
RSI-02656-1300UG	0.265625	17/64	+0.012/+0.02	13	0/+0.25
RSI-02813-1300UG	0.28125	9/32	+0.012/+0.02	13	0/+0.25
RSI-02969-1300UG	0.296875	19/64	+0.012/+0.02	13	0/+0.25
RSI-03125-1300UG	0.3125	5/16	+0.012/+0.02	13	0/+0.25
RSI-03281-1300UG	0.328125	21/64	+0.012/+0.02	13	0/+0.25
RSI-03438-1300UG	0.34375	11/32	+0.012/+0.02	13	0/+0.25

● Above data are typical parameters.

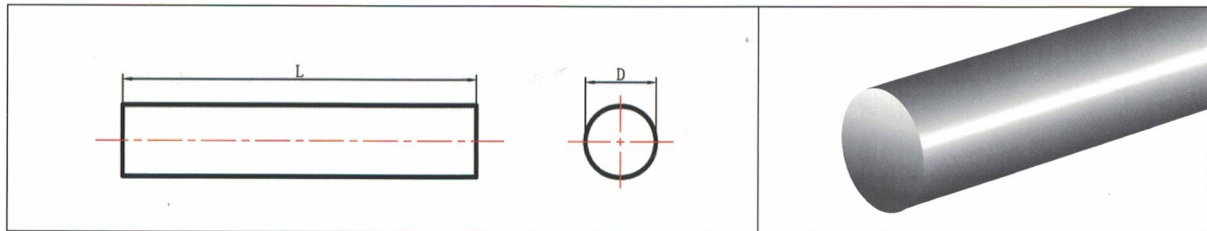
Available Grade

MH10F	UH8	MH7	SH904	CS40	CS43
<input checked="" type="checkbox"/>	<input type="checkbox"/>	<input type="checkbox"/>	<input type="checkbox"/>	<input type="checkbox"/>	<input type="checkbox"/>

● Please contact with us for more specifications.

■ In Stock □ Check inventory

Unground Rod, Random Lengths



Type: RSI
Inch Sizes 23/64" to 1" Diameter

Item No.	OD		Tol.	L	Tol.
	(inch)		(inch)	(inch)	(inch)
RSI-03594-1300UG	0.359375	23/64	+0.012/+0.02	13	0/+0.25
RSI-03750-1300UG	0.375	3/8	+0.012/+0.02	13	0/+0.25
RSI-03906-1300UG	0.390625	25/64	+0.012/+0.02	13	0/+0.25
RSI-04063-1300UG	0.40625	13/32	+0.012/+0.02	13	0/+0.25
RSI-04219-1300UG	0.421875	27/64	+0.012/+0.02	13	0/+0.25
RSI-04375-1300UG	0.4375	7/16	+0.012/+0.02	13	0/+0.25
RSI-04531-1300UG	0.453125	29/64	+0.012/+0.02	13	0/+0.25
RSI-04688-1300UG	0.46875	15/32	+0.012/+0.02	13	0/+0.25
RSI-04844-1300UG	0.484375	31/64	+0.012/+0.02	13	0/+0.25
RSI-05000-1300UG	0.5	1/2	+0.012/+0.02	13	0/+0.25
RSI-05313-1300UG	0.53125	17/32	+0.012/+0.02	13	0/+0.25
RSI-05625-1300UG	0.5625	9/16	+0.012/+0.02	13	0/+0.25
RSI-06250-1300UG	0.625	5/8	+0.012/+0.02	13	0/+0.25
RSI-06875-1300UG	0.6875	11/16	+0.012/+0.02	13	0/+0.25
RSI-07500-1300UG	0.75	3/4	+0.012/+0.02	13	0/+0.25
RSI-08125-1300UG	0.8125	13/16	+0.012/+0.02	13	0/+0.25
RSI-08750-1300UG	0.875	7/8	+0.012/+0.02	13	0/+0.25
RSI-10000-1300UG	1	1	+0.012/+0.02	13	0/+0.25

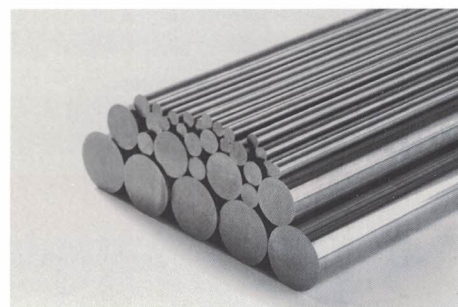
● Above data are typical parameters.

Available Grade

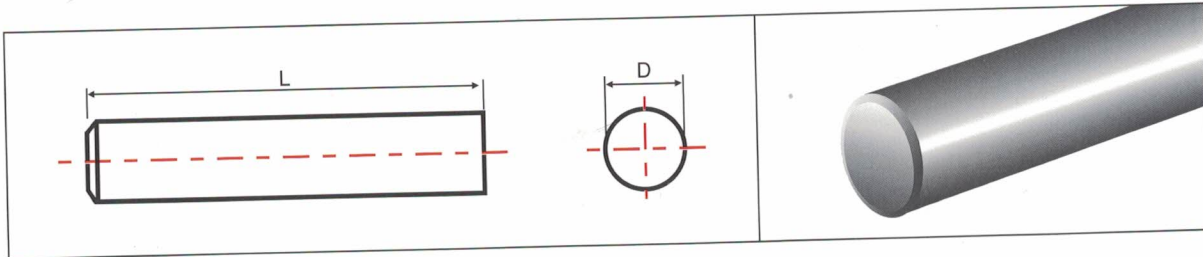
MH10F	UH8	MH7	SH904	CS40	CS43
<input checked="" type="checkbox"/>	<input type="checkbox"/>	<input type="checkbox"/>	<input type="checkbox"/>	<input type="checkbox"/>	<input type="checkbox"/>

● Please contact with us for more specifications.

■ In Stock □ Check inventory



Precision Ground Rod, Cut to Length, With Chamfer



Type: RSFM
Metric Sizes 3mm to 10mm Diameter
h6 tolerance

Item No.	OD (mm)	Tol. h6 (mm)	L (mm)	Tol. (mm)	c (mm)
RSFM-0300-0390PG	3	0/-0.006	39	0/+0.5	0.3
RSFM-0300-0400PG	3	0/-0.006	40	0/+0.5	0.3
RSFM-0300-0500PG	3	0/-0.006	50	0/+0.5	0.3
RSFM-0400-0500PG	4	0/-0.008	50	0/+0.5	0.4
RSFM-0400-0510PG	4	0/-0.008	51	0/+0.5	0.4
RSFM-0400-0750PG	4	0/-0.008	75	0/+0.8	0.4
RSFM-0500-0510PG	5	0/-0.008	51	0/+0.5	0.4
RSFM-0500-0550PG	5	0/-0.008	55	0/+0.6	0.4
RSFM-0600-0500PG	6	0/-0.008	50	0/+0.5	0.6
RSFM-0600-0510PG	6	0/-0.008	51	0/+0.5	0.6
RSFM-0600-0550PG	6	0/-0.008	55	0/+0.6	0.6
RSFM-0600-0570PG	6	0/-0.008	57	0/+0.6	0.6
RSFM-0600-0580PG	6	0/-0.008	58	0/+0.6	0.6
RSFM-0600-0600PG	6	0/-0.008	60	0/+0.6	0.6
RSFM-0600-0630PG	6	0/-0.008	63	0/+0.6	0.6
RSFM-0600-0700PG	6	0/-0.008	70	0/+0.7	0.6
RSFM-0600-0750PG	6	0/-0.008	75	0/+0.8	0.6
RSFM-0600-0800PG	6	0/-0.008	80	0/+0.8	0.6
RSFM-0600-1000PG	6	0/-0.008	100	0/+1.0	0.6
RSFM-0600-0640PG	6	0/-0.008	64	0/+0.6	0.6
RSFM-0800-0590PG	8	0/-0.009	59	0/+0.6	0.6
RSFM-0800-0630PG	8	0/-0.009	63	0/+0.6	0.6
RSFM-0800-0640PG	8	0/-0.009	64	0/+0.6	0.6
RSFM-0800-0750PG	8	0/-0.009	75	0/+0.8	0.6
RSFM-0800-0800PG	8	0/-0.009	80	0/+0.8	0.6
RSFM-0800-0900PG	8	0/-0.009	90	0/+0.9	0.6
RSFM-0800-1000PG	8	0/-0.009	100	0/+1.0	0.6
RSFM-1000-0670PG	10	0/-0.009	67	0/+0.7	0.6
RSFM-1000-0700PG	10	0/-0.009	70	0/+0.7	0.6

● Above data are typical parameters.

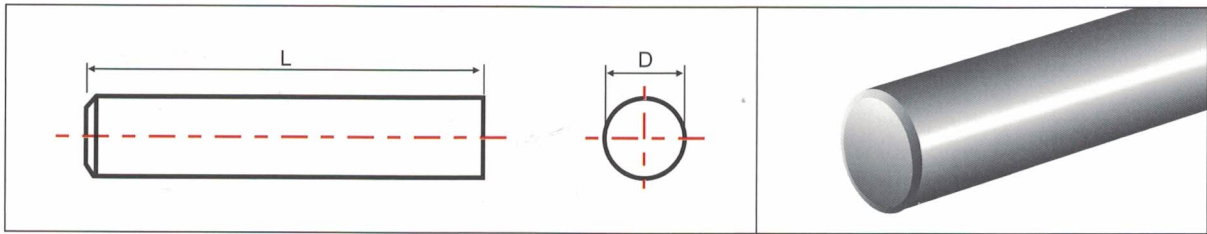
Available Grade

MH10F	UH8	CH03D	MH7	SH904	CS40	CS43
<input checked="" type="checkbox"/>	<input type="checkbox"/>	<input type="checkbox"/>	<input type="checkbox"/>	<input type="checkbox"/>	<input type="checkbox"/>	<input type="checkbox"/>

● Please contact with us for more specifications.

■ In Stock □ Check inventory

Precision Ground Rod, Cut to Length, With Chamfer



Type: RSFM
Metric Sizes 10mm to 25mm Diameter
h6 tolerance

Item No.	OD (mm)	Tol. h6 (mm)	L (mm)	Tol. (mm)	c (mm)
RSFM-1000-0720PG	10	0/-0.009	72	0/+0.7	0.6
RSFM-1000-0730PG	10	0/-0.009	73	0/+0.7	0.6
RSFM-1000-0750PG	10	0/-0.009	75	0/+0.8	0.6
RSFM-1000-0900PG	10	0/-0.009	90	0/+0.9	0.6
RSFM-1000-1000PG	10	0/-0.009	100	0/+1.0	0.6
RSFM-1200-0740PG	12	0/-0.011	74	0/+0.7	0.8
RSFM-1200-0750PG	12	0/-0.011	75	0/+0.8	0.8
RSFM-1200-0830PG	12	0/-0.011	83	0/+0.8	0.8
RSFM-1200-0840PG	12	0/-0.011	84	0/+0.8	0.8
RSFM-1200-1000PG	12	0/-0.011	100	0/+1.0	0.8
RSFM-1200-1200PG	12	0/-0.011	120	0/+1.2	0.8
RSFM-1400-0760PG	14	0/-0.011	76	0/+0.8	0.8
RSFM-1400-0830PG	14	0/-0.011	83	0/+0.8	0.8
RSFM-1400-0840PG	14	0/-0.011	84	0/+0.8	0.8
RSFM-1400-0890PG	14	0/-0.011	89	0/+0.9	0.8
RSFM-1600-0830PG	16	0/-0.011	83	0/+0.8	0.8
RSFM-1600-0920PG	16	0/-0.011	92	0/+0.9	0.8
RSFM-1600-0930PG	16	0/-0.011	93	0/+0.9	0.8
RSFM-1600-1000PG	16	0/-0.011	100	0/+1.0	0.8
RSFM-1600-1300PG	16	0/-0.011	130	0/+1.3	0.8
RSFM-1800-0850PG	18	0/-0.011	85	0/+0.9	1
RSFM-1800-0930PG	18	0/-0.011	93	0/+0.9	1
RSFM-2000-0930PG	20	0/-0.013	93	0/+0.9	1
RSFM-2000-1000PG	20	0/-0.013	100	0/+1.0	1
RSFM-2000-1050PG	20	0/-0.013	105	0/+1.0	1
RSFM-2000-1250PG	20	0/-0.013	125	0/+1.3	1
RSFM-2000-1500PG	20	0/-0.013	150	0/+1.5	1
RSFM-2500-1030PG	25	0/-0.013	103	0/+1.0	1.5
RSFM-2500-1500PG	25	0/-0.013	150	0/+1.5	1.5

● Above data are typical parameters.

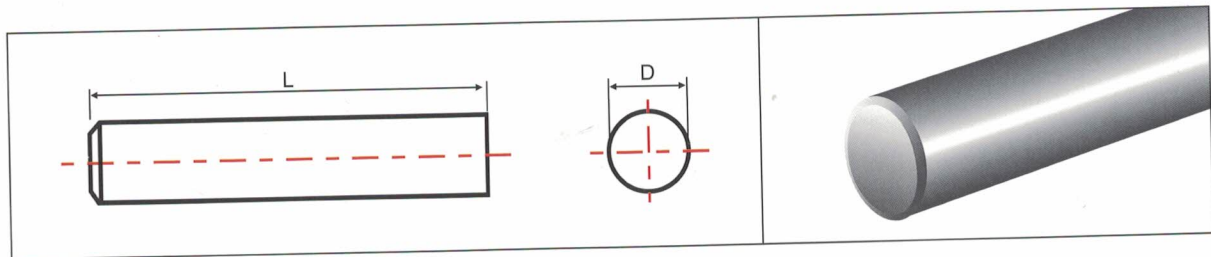
Available Grade

MH10F	UH8	CH03D	MH7	SH904	CS40	CS43
<input checked="" type="checkbox"/>	<input type="checkbox"/>	<input type="checkbox"/>	<input type="checkbox"/>	<input type="checkbox"/>	<input type="checkbox"/>	<input type="checkbox"/>

● Please contact with us for more specifications.

■ In Stock □ Check inventory

Precision Ground Rod, Cut to Length, With Chamfer



Type: RSFI
Inch Sizes 1/8" to 5/16" Diameter
h6 tolerance

Item No.	OD		Tol. h6	L	Tol.	c
	(inch)	(inch)	(inch)	(inch)	(inch)	(inch)
RSFI-01250-0150DG	0.125	1/8	0/-0.00031	1 1/2	0/+0.02	0.015
RSFI-01250-0200DG	0.125	1/8	0/-0.00031	2	0/+0.02	0.015
RSFI-01250-0225DG	0.125	1/8	0/-0.00031	2 1/4	0/+0.023	0.015
RSFI-01250-0250DG	0.125	1/8	0/-0.00031	2 1/2	0/+0.025	0.015
RSFI-01250-0300DG	0.125	1/8	0/-0.00031	3	0/+0.03	0.015
RSFI-01250-0400DG	0.125	1/8	0/-0.00031	4	0/+0.04	0.015
RSFI-01875-0150DG	0.1875	3/16	0/-0.00031	1 1/2	0/+0.02	0.015
RSFI-01875-0200DG	0.1875	3/16	0/-0.00031	2	0/+0.02	0.015
RSFI-01875-0250DG	0.1875	3/16	0/-0.00031	2 1/2	0/+0.025	0.015
RSFI-01875-0275DG	0.1875	3/16	0/-0.00031	2 3/4	0/+0.028	0.015
RSFI-01875-0300DG	0.1875	3/16	0/-0.00031	3	0/+0.03	0.015
RSFI-01875-0400DG	0.1875	3/16	0/-0.00031	4	0/+0.04	0.015
RSFI-02500-0150DG	0.25	1/4	0/-0.00035	1 1/2	0/+0.02	0.015
RSFI-02500-0200DG	0.25	1/4	0/-0.00035	2	0/+0.02	0.015
RSFI-02500-0250DG	0.25	1/4	0/-0.00035	2 1/2	0/+0.025	0.015
RSFI-02500-0300DG	0.25	1/4	0/-0.00035	3	0/+0.03	0.015
RSFI-02500-0325DG	0.25	1/4	0/-0.00035	3 1/4	0/+0.033	0.015
RSFI-02500-0350DG	0.25	1/4	0/-0.00035	3 1/2	0/+0.035	0.015
RSFI-02500-0400DG	0.25	1/4	0/-0.00035	4	0/+0.04	0.015
RSFI-02500-0600DG	0.25	1/4	0/-0.00035	6	0/+0.06	0.015
RSFI-03125-0250DG	0.3125	5/16	0/-0.00035	2 1/2	0/+0.025	0.015
RSFI-03125-0200DG	0.3125	5/16	0/-0.00035	2	0/+0.02	0.015
RSFI-03125-0300DG	0.3125	5/16	0/-0.00035	3	0/+0.03	0.015

● Above data are typical parameters.

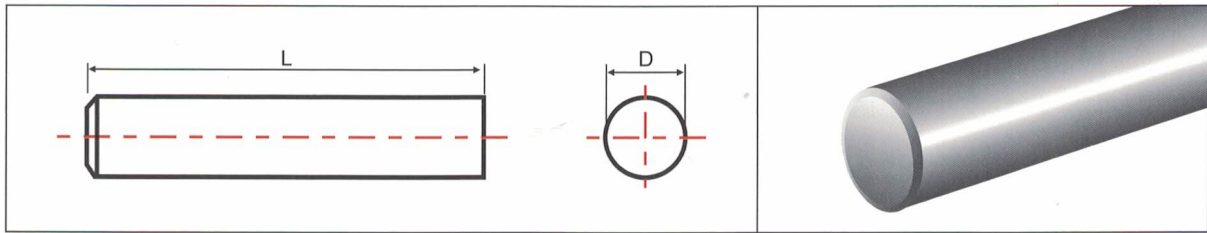
Available Grade

MH10F	UH8	CH03D	MH7	SH904	CS40	CS43
<input checked="" type="checkbox"/>	<input type="checkbox"/>	<input type="checkbox"/>	<input type="checkbox"/>	<input type="checkbox"/>	<input type="checkbox"/>	<input type="checkbox"/>

● Please contact with us for more specifications.

■ In Stock □ Check inventory

Precision Ground Rod, Cut to Length, With Chamfer



Type: RSFI
Inch Sizes 5/16" to 1/2" Diameter
h6 tolerance

Item No.	OD		Tol. h6	L	Tol.	c
	(inch)		(inch)	(inch)	(inch)	(inch)
RSFI-03125-0350DG	0.3125	5/16	0/-0.00035	3 1/2	0/+0.035	0.015
RSFI-03125-0400DG	0.3125	5/16	0/-0.00035	4	0/+0.04	0.015
RSFI-03125-0600DG	0.3125	5/16	0/-0.00035	6	0/+0.06	0.015
RSFI-03750-0200DG	0.375	3/8	0/-0.00035	2	0/+0.02	0.015
RSFI-03750-0250DG	0.375	3/8	0/-0.00035	2 1/2	0/+0.025	0.015
RSFI-03750-0300DG	0.375	3/8	0/-0.00035	3	0/+0.03	0.015
RSFI-03750-0350DG	0.375	3/8	0/-0.00035	3 1/2	0/+0.035	0.015
RSFI-03750-0400DG	0.375	3/8	0/-0.00035	4	0/+0.04	0.015
RSFI-03750-0450DG	0.375	3/8	0/-0.00035	4 1/2	0/+0.045	0.015
RSFI-03750-0500DG	0.375	3/8	0/-0.00035	5	0/+0.05	0.015
RSFI-03750-0600DG	0.375	3/8	0/-0.00035	6	0/+0.06	0.015
RSFI-04375-0250DG	0.4375	7/16	0/-0.00043	2 1/2	0/+0.025	0.031
RSFI-04375-0275DG	0.4375	7/16	0/-0.00043	2 3/4	0/+0.028	0.031
RSFI-04375-0300DG	0.4375	7/16	0/-0.00043	3	0/+0.03	0.031
RSFI-04375-0400DG	0.4375	7/16	0/-0.00043	4	0/+0.04	0.031
RSFI-04375-0450DG	0.4375	7/16	0/-0.00043	4 1/2	0/+0.045	0.031
RSFI-04375-0600DG	0.4375	7/16	0/-0.00043	6	0/+0.06	0.031
RSFI-05000-0250DG	0.5	1/2	0/-0.00043	2 1/2	0/+0.025	0.031
RSFI-05000-0300DG	0.5	1/2	0/-0.00043	3	0/+0.03	0.031
RSFI-05000-0350DG	0.5	1/2	0/-0.00043	3 1/2	0/+0.035	0.031
RSFI-05000-0400DG	0.5	1/2	0/-0.00043	4	0/+0.04	0.031
RSFI-05000-0450DG	0.5	1/2	0/-0.00043	4 1/2	0/+0.045	0.031
RSFI-05000-0500DG	0.5	1/2	0/-0.00043	5	0/+0.05	0.031

● Above data are typical parameters.

Available Grade

MH10F	UH8	CH03D	MH7	SH904	CS40	CS43
<input checked="" type="checkbox"/>	<input type="checkbox"/>	<input type="checkbox"/>	<input type="checkbox"/>	<input type="checkbox"/>	<input type="checkbox"/>	<input type="checkbox"/>

● Please contact with us for more specifications.

■ In Stock □ Check inventory

