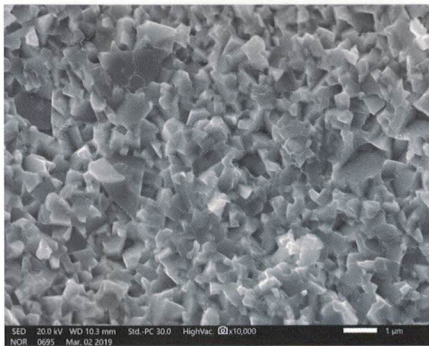
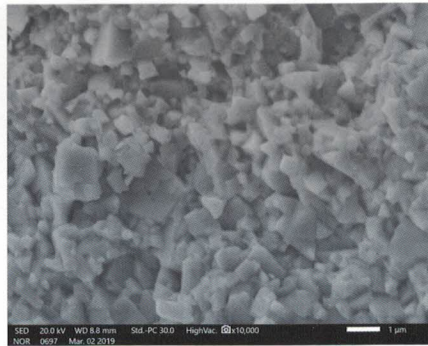


木工应用牌号表 Woodworking Applications Grade Chart

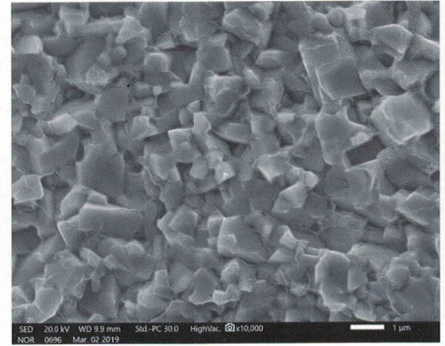
牌号 Grade	粘结相 Binder(%)	晶粒度 Grain Size	密度Density g/cm ³	硬度Hardness HRA	抗折力T.R.S N/mm ²	USA Code	ISO Code
UH5	3.0	亚细 Ultrafine	15.15	94.3	2600	C4	K01
UH12	12.0	亚细 Ultrafine	14.15	92.2	4000	C1	K40
MH3	3.3	亚细 Ultrafine	15.1	94.6	2400	C4	K01
MH4	3.3	超细 Submicron	15.2	94.6	2400	C4	K05
MH5	4.8	超细 Submicron	14.95	94.1	2400	C4	K05
MH6	5.0	超细 Submicron	14.95	93.6	2800	C3	K10
MH10F	10.0	超细 Submicron	14.45	91.8	3800	C2	K30
CF10	6.0	细 Fine	14.9	92.0	3000	C3	K10
CF10A	6.0	细 Fine	14.9	92.7	3000	C3	K10
CF10R	6.5	细 Fine	14.8	92.0	2200	C3	K10
CF20	8.0	细 Fine	14.7	91.0	3000	C3	K10
CF20A	8.0	细 Fine	14.65	91.9	3200	C3	K10
CF30	10.0	细 Fine	14.45	91.2	3300	C1	K30
CK10	6.0	中细 Mediumfine	14.9	91.3	2100	C3	K10
CK101	5.0	中细 Mediumfine	15.0	92.1	2000	C3	K10
CK15	7.0	中细 Mediumfine	14.8	91.0	2300	C2	K20
CK20	8.0	中细 Mediumfine	14.7	90.2	2500	C2	K20
CK30	9.0	中细 Mediumfine	14.6	89.8	2600	C1	K30
CK40	12.0	中细 Mediumfine	14.3	88.8	2800	C1	K40
CK301	7.8	粗 Coarse	14.8	89.0	2250	C1	K30
CK401	11.5	粗 Coarse	14.3	87.6	2700	C1	K40
CK402	15.0	中 Medium	14.0	87.6	3000	C1	K40



UH5



MH6



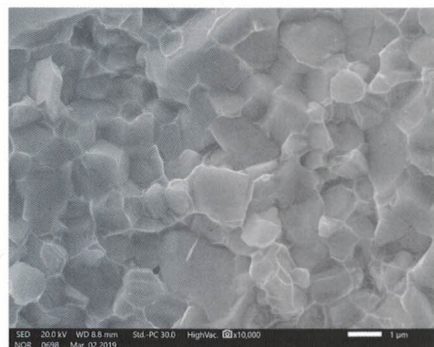
CF10

金工应用牌号表 Metalworking Applications Grade Chart

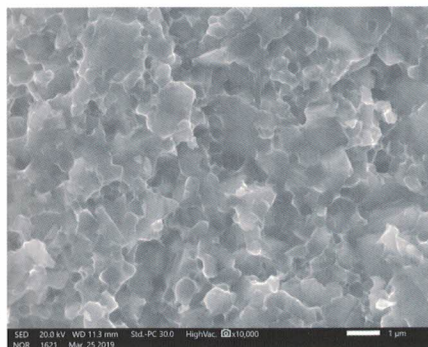
牌号	粘结相	晶粒度	密度 Density	硬度 Hardness	抗折力 T.R.S	USA Code	ISO Code
Grade	Binder(%)	Grain Size	g/cm ³	HRA	N/mm ²		
CX30	12.0	中细 Mediumfine	11.9	91.6	2500		P30
CP30	12.0	中细 Mediumfine	11.4	91.6	2200		P30

金属陶瓷牌号表 Cermet Grade Chart

牌号	粘结相	晶粒度	密度 Density	硬度 Hardness	抗折力 T.R.S	USA Code	ISO Code
Grade	Binder(%)	Grain Size	g/cm ³	HRA	N/mm ²		
CMT70	16.0	细 Fine	7.3	92.0	2100		
CMT80	18.0	细 Fine	7.25	91.0	2250		



CX30



CMT70

锯齿-木材加工 Saw Tips For Wood

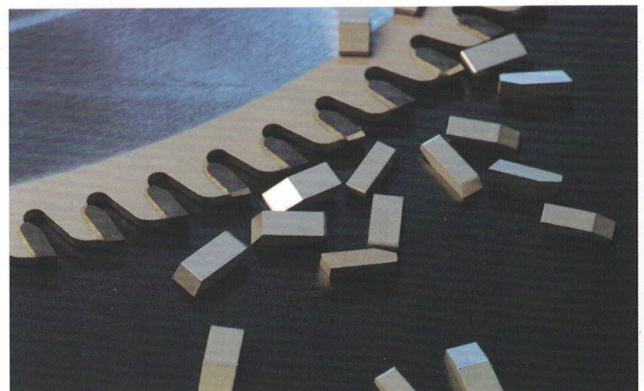
牌号	粘结相	晶粒度	密度 Density	硬度 Hardness	抗折力 T.R.S	USA Code	ISO Code
Grade	Binder(%)	Grain Size	g/cm ³	HRA	N/mm ²		
UH5	3.0	亚细 Ultrafine	15.15	94.3	2600	C4	K01
MH3	3.3	亚细 Ultrafine	15.1	94.6	2400	C4	K01
MH4	3.3	超细 Submicro	15.2	94.6	2400	C4	K05
MH5	4.8	超细 Submicro	14.95	94.1	2400	C4	K05
MH6	5.0	超细 Submicro	14.95	93.6	2800	C3	K10
CF10A	6.0	细 Fine	14.9	92.7	3000	C3	K10
CF10R	6.5	细 Fine	14.85	92.0	2200	C3	K10
CF20A	8.0	细 Fine	14.65	91.9	3200	C3	K10
CK10	6.0	中细 Mediumfine	14.9	91.3	2100	C3	K10
CK15	7.0	中细 Mediumfine	14.8	91.0	2300	C2	K20
CK20	8.0	中细 Mediumfine	14.7	90.2	2500	C2	K20
CK30	9.0	中细 Mediumfine	14.6	89.8	2600	C1	K30
CK40	12.0	中细 Mediumfine	14.3	88.8	2800	C1	K40

■ 牌号应用推荐表 Grade recommendation by applications

牌号	刨花板	高密度板	中密度板	硬木	软木	北美实木	冬季木材
Grade	Chipboard	HDF	MDF	Hardwood	Softwood	Sawmills	Winter Wood
UH5	★★★★	★★★★					
MH3	★★★★	★★★★	★★★				
MH4	★★★	★★★★	★★★★				
MH5	★★★	★★★	★★★★				
MH6	★★	★★★	★★★★	★★★★			
CF10A				★★★★	★★★		
CF10R				★★★	★★★		
CK10				*	★★★★		
CK15					★★	★★★★	
CK30					*	★★★★	
CK40						★★	★★★★

推荐图例说明 Notes

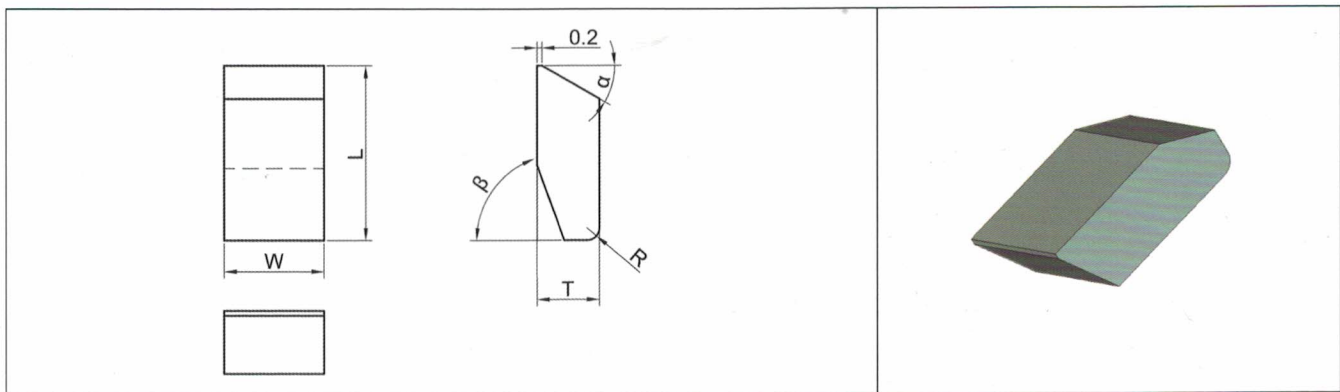
★ 一般 Moderate ★★ 良好 OK ★★★ 优秀 Very good ★★★★ 卓越 Excellent



• 所列牌号参数均为典型值，具体请参照我司材质标准技术表。
All the grade parameters are typical value, please refer to our standard grade datasheet for more details.

锯齿-木材加工 Saw Tips For Wood

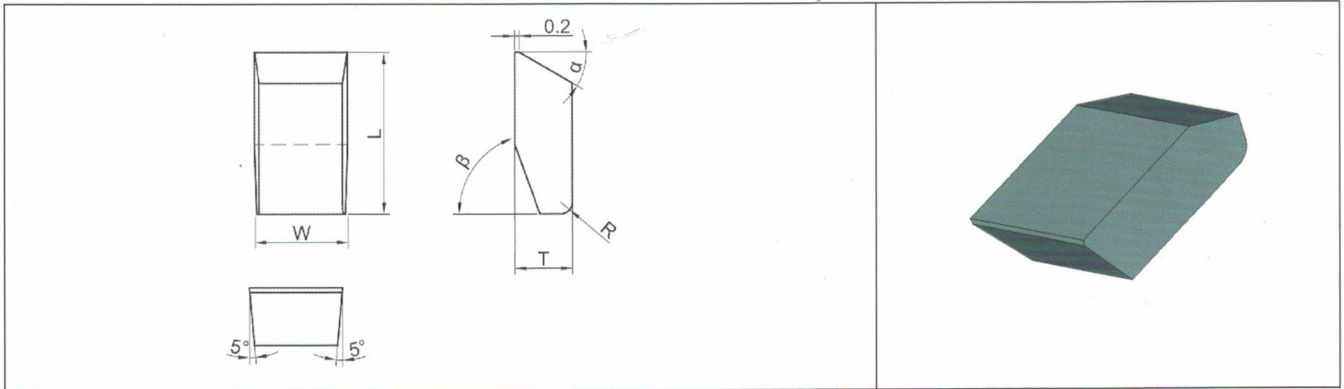
■ A型锯齿 Carbide Saw Tips- Style A



型号 Type	L mm	T mm	W Max mm	α°	β°	R	Prebrazed Option (是否可预焊)
A4020-W	4.0	2.0	3.5	20	70	0.5	
A4516-W	4.5	1.6	3.5	20	60	C0.5	
A5015-W	5.0	1.5	3.5	15	70	0.4	
A5515-W	5.5	1.5	3.5	15	70	0.4	
A5517-W	5.5	1.7	3.5	15	70	0.4	
A5520-W	5.5	2.0	4.0	20	70	0.5	
A5525-W	5.5	2.5	4.0	15	60	0.5	
A6018-W	6.0	1.8	4.0	15	70	0.5	
A6020-W	6.0	2.0	4.0	20	70	0.5	
A6518-W	6.5	1.8	4.0	20	70	0.5	√
A6520-W	6.5	2.0	4.0	20	70	0.5	√
A6523-W	6.5	2.3	4.0	25	70	0.5	√
A7020-W	7.0	2.0	4.0	20	70	0.5	√
A7523-W	7.5	2.3	4.0	30	70	0.5	√
A8025-W	8.0	2.5	4.5	30	70	0.5	√
A8027-W	8.0	2.7	4.5	20	70	0.5	√
A8528-W	8.5	2.8	5.0	30	70	0.5	√
A9025-W	9.0	2.5	6.0	30	70	0.5	√
A9028-W	9.0	2.8	6.0	30	70	0.5	√
A9528-W	9.5	2.8	6.0	30	70	0.5	√
A9530-W	9.5	3.0	6.0	30	70	0.5	√
A10024-W	10.0	2.4	6.0	30	70	0.5	√
A10028-W	10.0	2.8	6.0	30	70	0.5	√
A10525-W	10.5	2.5	7.0	30	70	0.5	√
A10528-W	10.5	2.8	10.0	30	70	0.5	√
A10530-W	10.5	3.0	10.0	30	70	0.5	√
A10535-W	10.5	3.5	10.0	30	70	0.5	√
A10735-W	10.7	3.5	10.0	30	70	0.5	√
A11540-W	11.5	4.0	10.0	30	70	0.5	√
A12035-W	12.0	3.5	10.0	30	70	0.5	√
A12535-W	12.5	3.5	10.0	30	70	0.5	√
A13040-W	13.0	4.0	10.0	30	70	0.5	√
A14035-W	14.0	3.5	10.0	30	70	0.5	√

锯齿-木材加工 Saw Tips For Wood

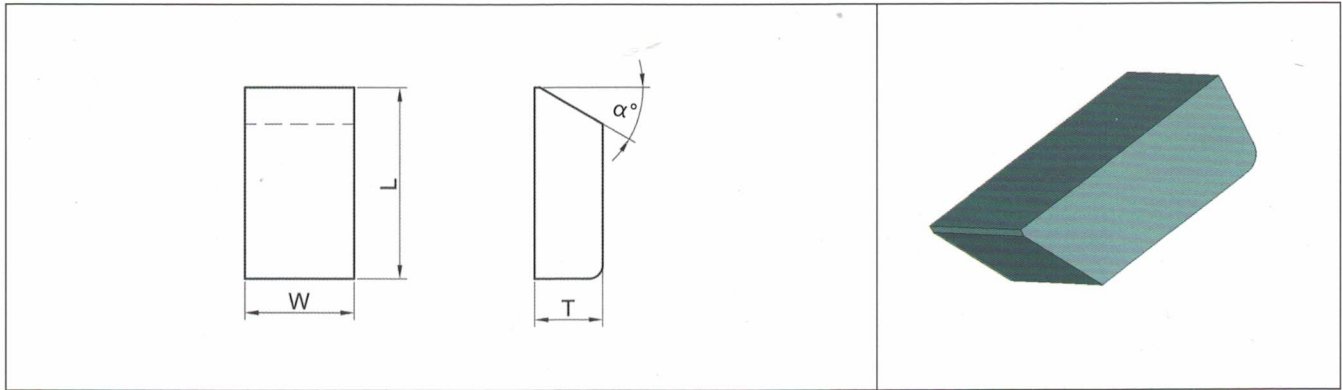
■ B型锯齿 Carbide Saw Tips- Style B



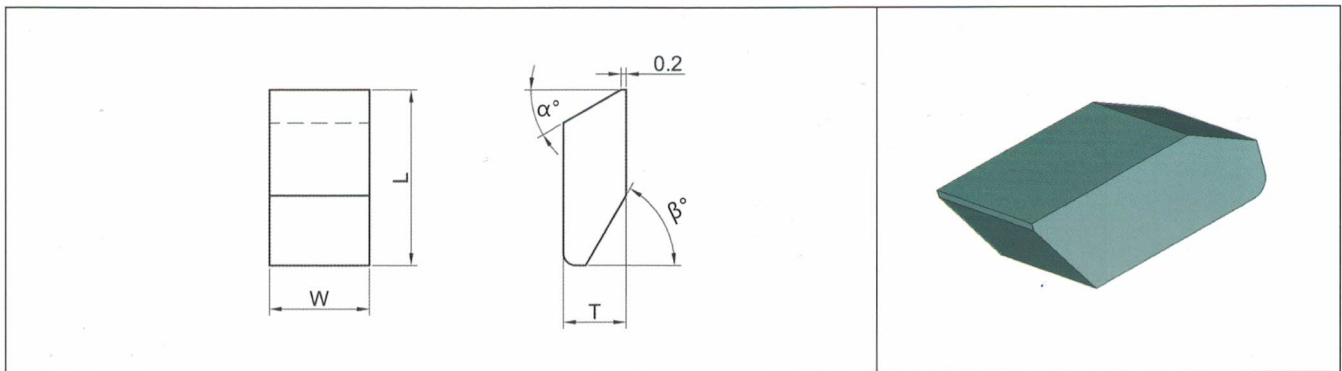
型号 Type	L mm	T mm	W Max mm	α°	β°	R	Prebrazed Option (是否可预焊)
B4020-W	4.0	2.0	3.5	20	70	0.5	
B4516-W	4.5	1.6	3.5	20	60	C0.5	
B5015-W	5.0	1.5	3.5	15	70	0.4	
B5515-W	5.5	1.5	3.5	15	70	0.4	
B5517-W	5.5	1.7	3.5	15	70	0.4	
B5520-W	5.5	2.0	4.0	20	70	0.5	
B5525-W	5.5	2.5	4.0	15	60	0.5	
B6018-W	6.0	1.8	4.0	15	70	0.5	
B6020-W	6.0	2.0	4.0	20	70	0.5	
B6518-W	6.5	1.8	4.0	20	70	0.5	√
B6520-W	6.5	2.0	4.0	20	70	0.5	√
B6523-W	6.5	2.3	4.0	25	70	0.5	√
B7020-W	7.0	2.0	4.0	20	70	0.5	√
B7023-W	7.0	2.3	4.0	25	70	0.5	√
B7523-W	7.5	2.3	4.5	30	70	0.5	√
B7525-W	7.5	2.5	4.5	30	70	0.5	√
B8023-W	8.0	2.3	4.5	25	70	0.5	√
B8025-W	8.0	2.5	4.5	30	70	0.5	√
B8027-W	8.0	2.7	4.5	20	70	0.5	√
B8525-W	8.5	2.5	4.5	30	70	0.5	√
B8528-W	8.5	2.8	5.0	30	70	0.5	√
B9025-W	9.0	2.5	6.0	30	70	0.5	√
B9028-W	9.0	2.8	6.0	30	70	0.5	√
B9030-W	9.0	3.0	6.0	30	60	0.5	√
B9525-W	9.5	2.5	6.0	30	60	0.5	√
B9530-W	9.5	3.0	6.0	30	70	0.5	√
B10024-W	10.0	2.4	6.0	30	70	0.5	√
B10028-W	10.0	2.8	6.0	30	70	0.5	√
B10525-W	10.5	2.5	7.0	30	70	0.5	√
B10528-W	10.5	2.8	10.0	30	70	0.5	√
B10530-W	10.5	3.0	10.0	30	70	0.5	√
B10535-W	10.5	3.5	10.0	30	70	0.5	√
B10735-W	10.7	3.5	10.0	30	70	0.5	√
B11540-W	11.5	4.0	10.0	30	70	0.5	√
B12035-W	12.0	3.5	10.0	30	70	0.5	√
B12535-W	12.5	3.5	10.0	30	70	0.5	√
B13040-W	13.0	4.0	10.0	30	70	0.5	√
B14035-W	14.0	3.5	10.0	30	70	0.5	√

锯齿-木材加工 Saw Tips For Wood

■ 锯齿-北美标准 North America Standard



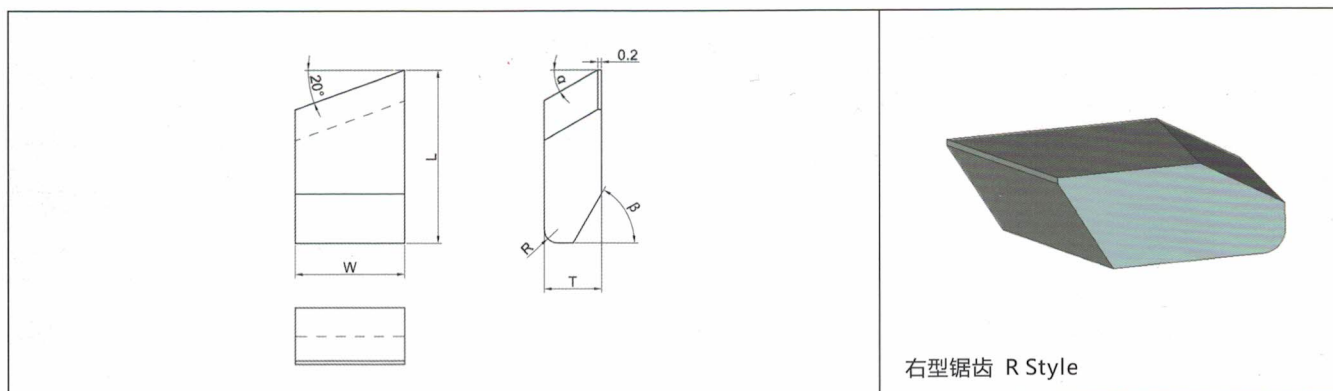
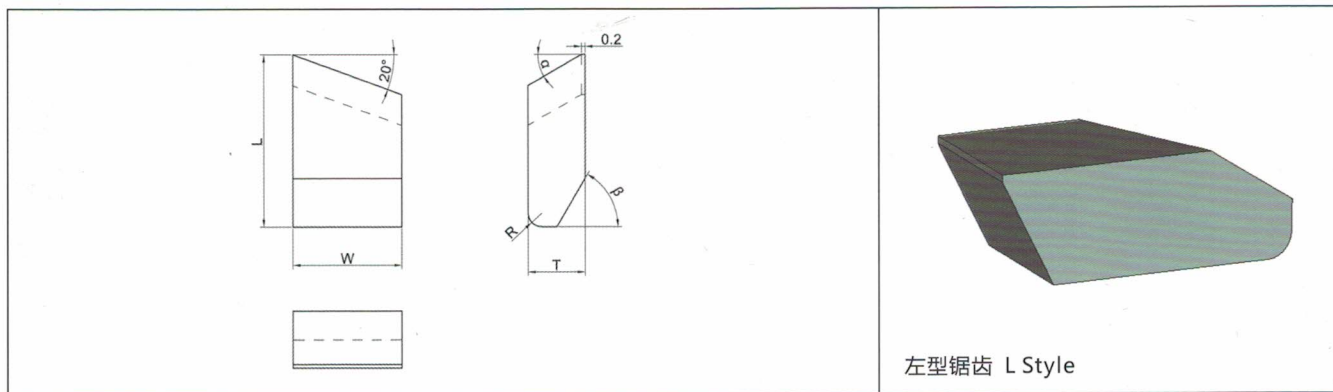
型号 Type	L Inch	T Inch	W Max Inch	α°	Pre-tinned Option (是否可预镀)
WA	0.250	0.062	0.215	30	✓
WB	0.281	0.078	0.312	30	✓
WC	0.281	0.093	0.250	30	✓
WD	0.312	0.093	0.312	30	✓
WE	0.375	0.093	0.375	30	✓
WF	0.500	0.125	0.375	30	✓
WG	0.375	0.125	0.750	30	✓
WH	0.344	0.125	0.300	30	✓
WQ	0.375	0.156	0.375	30	✓



型号 Type	L Inch	T Inch	W Max Inch	α°	β°	Pre-tinned Option (是否可预镀)
CWB	0.281	0.078	0.120	30	60	✓
CWD	0.312	0.093	0.312	30	60	✓
CWE	0.375	0.093	0.375	30	60	✓
CFW	0.500	0.125	0.650	30	60	✓
CGW	0.375	0.125	0.500	30	60	✓
CWH	0.344	0.125	0.300	30	60	✓
CWQ	0.375	0.156	0.300	30	60	✓
CWR	0.541	0.012	0.500	30	70	✓
CWX	0.435	0.126	0.500	35	67	✓

锯齿-木材加工 Saw Tips For Wood

■ 左右锯齿 Carbide Saw Tips - L & R Style



锯齿-木材加工 Saw Tips For Wood

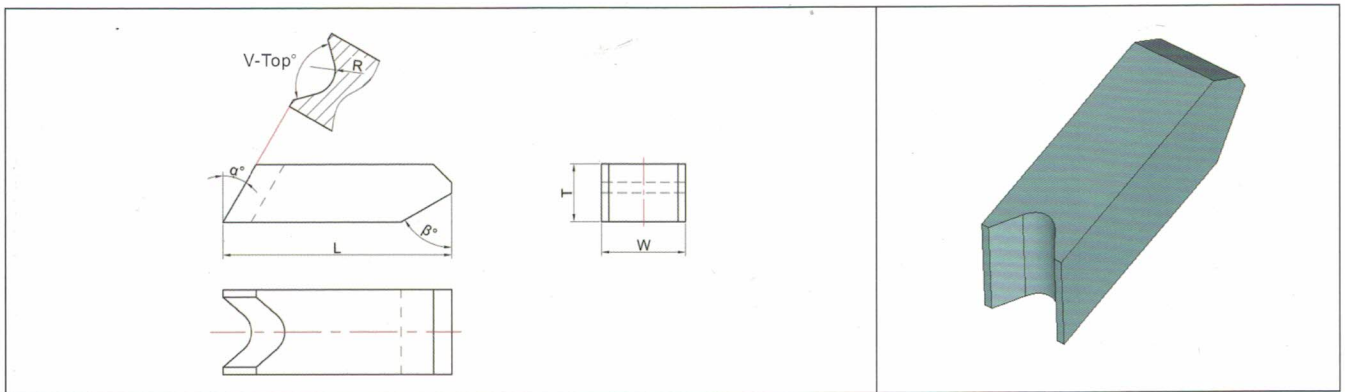
■ 左右锯齿 Carbide Saw Tips - L & R Style

型号 Type	L Inch	T Inch	W Inch	α°	β°	Pre-tinned Option (是否可预镀)
CWD-7135-L/R	0.312	0.093	0.135	30	60	√
CWD-7150-L/R	0.312	0.093	0.150	30	60	√
CWD-7165-L/R	0.312	0.093	0.165	30	60	√
CWD-7170-L/R	0.312	0.093	0.170	30	60	√
CWD-7180-L/R	0.312	0.093	0.180	30	60	√
CWD-7185-L/R	0.312	0.093	0.185	30	60	√
CWD-7200-L/R	0.312	0.093	0.200	30	60	√
CWD-7215-L/R	0.312	0.093	0.215	30	60	√
CWD-7220-L/R	0.312	0.093	0.220	30	60	√
CWD-7230-L/R	0.312	0.093	0.230	30	60	√
CWD-7250-L/R	0.312	0.093	0.250	30	60	√
CWD-7265-L/R	0.312	0.093	0.265	30	60	√
CWD-7270-L/R	0.312	0.093	0.270	30	60	√
CWE-7165-L/R	0.375	0.093	0.165	30	60	√
CWE-7170-L/R	0.375	0.093	0.170	30	60	√
CWE-7180-L/R	0.375	0.093	0.180	30	60	√
CWE-7185-L/R	0.375	0.093	0.185	30	60	√
CWE-7200-L/R	0.375	0.093	0.200	30	60	√
CWE-7215-L/R	0.375	0.093	0.215	30	60	√
CWE-7220-L/R	0.375	0.093	0.220	30	60	√
CWE-7230-L/R	0.375	0.093	0.230	30	60	√
CWE-7250-L/R	0.375	0.093	0.250	30	60	√
CWE-7265-L/R	0.375	0.095	0.265	30	60	√
CWE-7270-L/R	0.375	0.093	0.270	30	60	√
CWE-7290-L/R	0.375	0.093	0.290	30	60	√
CWF-7230-L/R	0.500	0.125	0.230	30	60	√
CWF-7250-L/R	0.500	0.125	0.250	30	60	√
CWF-7280-L/R	0.500	0.125	0.280	30	60	√
CWF-7290-L/R	0.500	0.125	0.290	30	60	√
CWF-7300-L/R	0.500	0.125	0.300	30	60	√
CWG-7150-L/R	0.375	0.125	0.150	30	60	√
CWG-7160-L/R	0.375	0.125	0.160	30	60	√
CWG-7180-L/R	0.375	0.125	0.180	30	60	√
CWG-7200-L/R	0.375	0.125	0.200	30	60	√
CWG-7215-L/R	0.375	0.125	0.215	30	60	√
CWG-7220-L/R	0.375	0.125	0.220	30	60	√
CWG-7230-L/R	0.375	0.125	0.230	30	60	√
CWG-7240-L/R	0.375	0.125	0.240	30	60	√
CWG-7250-R/L	0.375	0.125	0.250	30	60	√
CWG-7265-L/R	0.375	0.125	0.265	30	60	√
CWG-7270-L/R	0.38	0.130	0.270	30	63	√
CWG-7280-L/R	0.375	0.125	0.280	30	60	√
CWG-7290-L/R	0.375	0.125	0.290	30	60	√
CWG-7300-L/R	0.375	0.125	0.300	30	60	√
CWG-7360-L/R	0.375	0.125	0.360	30	60	√

● 未列出之规格和材质可按客户需求订制。
Non-standard specifications and grades can be provided upon request.

锯齿-木材加工 Saw Tips For Wood

■ V型锯齿 Carbide Saw Tips - V Top Style

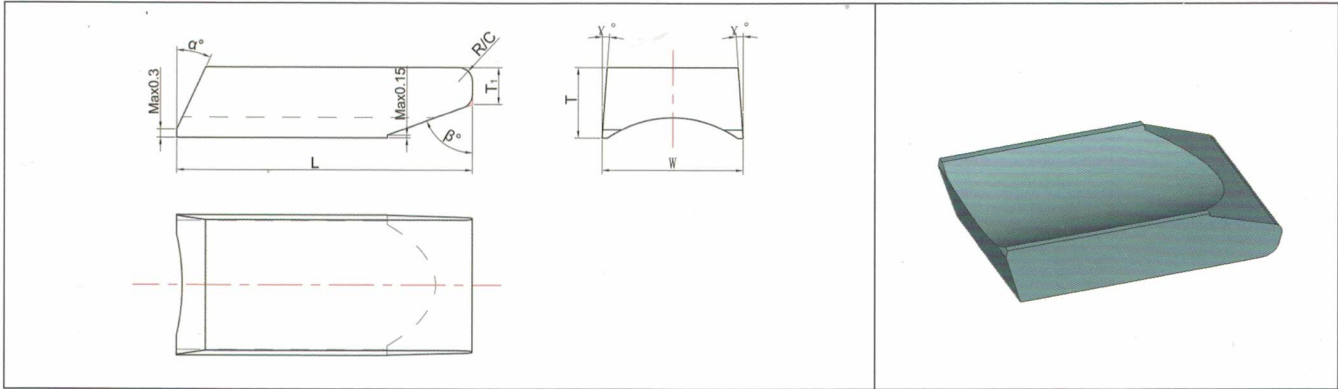


型号 Type	L Inch	T Inch	W Inch	α°	β°	V-Top $^\circ$	Pre-tinned Option (是否可预镀)
CWDV-7150	0.312	0.095	0.150	30	60	90	√
CWDV-7185	0.312	0.095	0.185	30	60	90	√
CWDV-7185	0.312	0.095	0.185	30	60	100	√
CWDV-7200	0.312	0.095	0.200	30	60	90	√
CWDV-7230	0.312	0.093	0.230	30	60	100	√
CWEV-7110	0.375	0.097	0.110	22	60	100	√
CWEV-7170	0.375	0.097	0.170	22	60	100	√
CWEV-7180	0.375	0.095	0.180	30	60	90	√
CWEV-7200	0.375	0.095	0.200	30	60	90	√
CWEV-7200	0.375	0.097	0.200	22	60	100	√
CWEV-7210	0.375	0.097	0.210	22	60	100	√
CWEV-7220	0.375	0.097	0.220	22	60	100	√
CWEV-7230	0.375	0.095	0.230	30	60	90	√
CWEV-7230	0.375	0.097	0.230	22	60	100	√
CWEV-7250	0.375	0.095	0.250	30	60	90	√
CWEV-7260	0.375	0.097	0.260	22	60	100	√
CWEV-7290	0.375	0.093	0.290	30	60	100	√
CWFV-7130	0.500	0.125	0.130	30	60	90	√
CWFV-7150	0.500	0.125	0.150	30	60	90	√
CWFV-7170	0.500	0.125	0.170	30	60	90	√
CWFV-7200	0.500	0.125	0.200	30	60	90	√
CWFV-7220	0.500	0.125	0.220	30	60	90	√
CWFV-7230	0.500	0.125	0.230	30	60	100	√
CWFV-7240	0.500	0.125	0.240	30	60	90	√
CWFV-7250	0.500	0.125	0.250	30	60	90	√
CWFV-7260	0.500	0.125	0.260	30	60	90	√
CWFV-7270	0.500	0.125	0.270	30	60	100	√
CWGV-7150	0.375	0.125	0.150	30	60	90	√
CWGV-7170	0.375	0.125	0.170	30	60	90	√
CWGV-7200	0.375	0.125	0.200	30	60	90	√
CWGV-7220	0.375	0.125	0.220	30	60	90	√
CWGV-7230	0.375	0.125	0.230	30	60	90	√
CWGV-7240	0.375	0.125	0.240	30	60	90	√
CWGV-7250	0.375	0.125	0.250	30	60	90	√
CWGV-7260	0.375	0.125	0.260	30	60	90	√
CWGV-7270	0.375	0.125	0.270	30	60	90	√
CWHV-7200	0.344	0.125	0.200	30	60	90	√

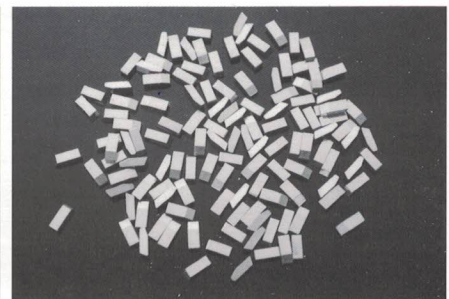
● 未列出之规格和材质可按客户需求订制。
Non-standard specifications and grades can be provided upon request.

锯齿-木材加工 Saw Tips For Wood

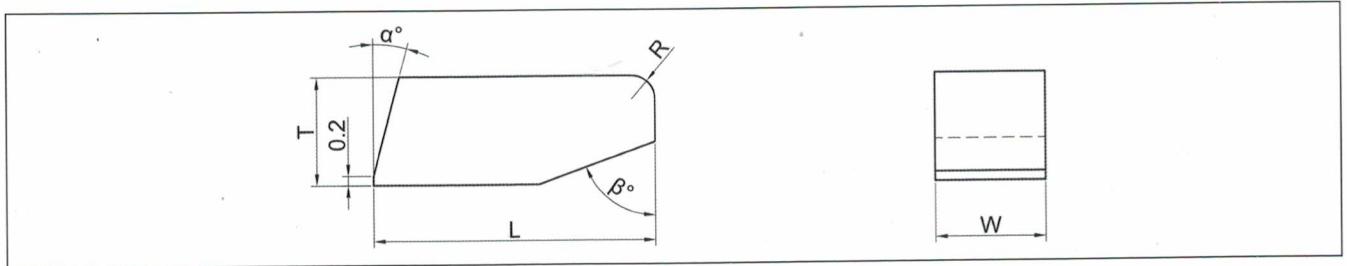
■ 背槽锯齿 Carbide Saw Tips - Hollow Style



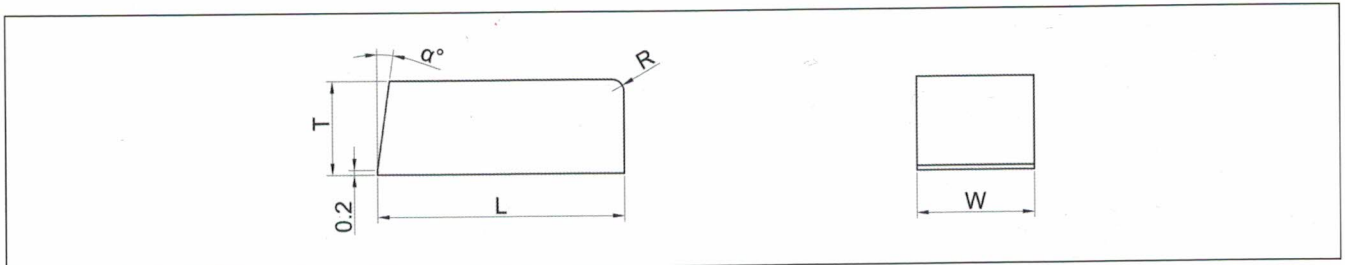
型号 Type	L mm	T mm	W mm	α°	β°	γ°	T1	R/C
CFT-7205	9.525	3.023	5.207	30	45	/	2.083	C0.763X53°
CFT-7230	9.525	3.404	5.842	20	45	/	1.575	C0.762X53°
HT56205-2.8	5.60	2.05	2.80	25	60	3	1.20	C0.4
HT7519-3.0	7.50	1.90	3.00	25	70	4	1.10	C0.5
HT8026-3.5	8.00	2.60	3.50	25	70	4	1.30	0.5
HT8026-3.7	8.00	2.60	3.70	25	70	4	1.30	0.5
HT8525-5.0	8.50	2.50	5.00	25	70	4	1.30	0.5
HT10525-3.5	10.50	2.50	3.50	25	70	4	1.30	0.5
HT10525-5.0	10.50	2.50	5.00	25	70	4	1.30	0.5
HT10526-3.7	10.50	2.60	3.70	25	70	4	1.30	0.5
HT10537-3.7	10.50	2.70	3.70	20	60	4	1.10	C0.5



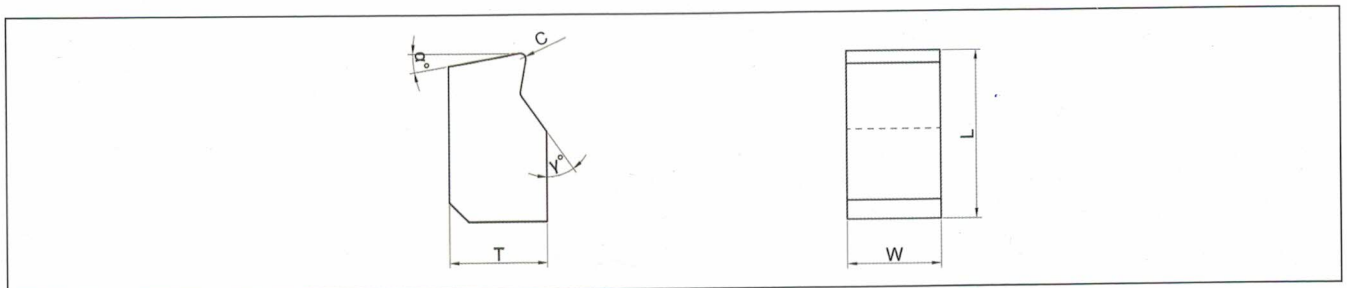
锯齿-金属加工 Saw Tips For Metals



型号 Type	L mm	T mm	W Max mm	α°	β°	R
CX5025-W	5.0	2.5	3.5	15°	50°	0.5
CX6023-W	6.0	2.3	4.0	15°	70°	0.5
CX6520-W	6.5	2.0	4.0	20°	60°	0.5
CX8030-W	8.0	3.0	4.5	6°	45°	0.6



型号 Type	L mm	T mm	W Max mm	α°	β°	R
NCX10540-W	10.5	4.0	10.0	8°	/	0.5
NCX12040-W	12.0	4.0	10.0	8°	/	C 0.4



型号 Type	L mm	T mm	W Max mm	α°	C
CMT4526-W	4.5	2.6	3.5	10°	0.51

锯齿-金属加工 Saw Tips For Metals

■ 牌号应用推荐表 Grade recommendation by applications

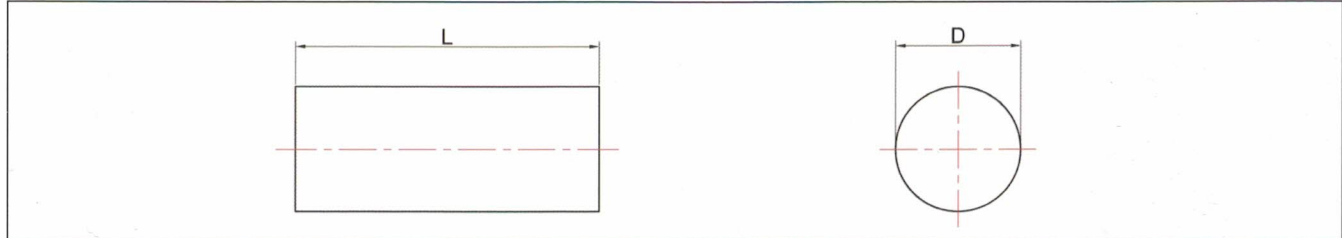
牌号	钢	不锈钢	铸铁	铝	其他有色金属	亚克力
Grade	Steel	Stainless Steel	Cast Iron	Aluminum	Other Non-ferrous Metals	Acrylic
CF10					★★★	
CF20					★★★	
MH4				★★★		★★★
MH6				★★★		
CX30	★★★★	★★★	★★★			
CP30	★★★★	★★	★★			
CMT70*	★★★★					
CMT80*	★★★					

*表示: 金属陶瓷牌号 / *: Cermet Grade

推荐图例说明 Notes

★ 一般 Moderate ★★ 良好 OK ★★★ 优秀 Very good ★★★★★ 卓越 Excellent

带锯锯齿 Band Saw Tips



牌号	粘结相	晶粒度	密度 Density	硬度 Hardness	抗折力 T.R.S	USA Code	ISO Code
Grade	Binder(%)	Grain Size	g/cm ³	HRA	N/mm ²		
MH10F	10.0	超细 Submicron	14.45	91.8	3800	C2	K30
UH12	12.0	亚细 Ultrafine	14.15	92.2	4000	C1	K40

型号 Type	D mm	Tolerance	L mm	Tolerance
∅ 1.32XL	1.32	±0.05	2.0~4.0	±0.05
∅ 1.60XL	1.60	±0.05	2.0~4.0	±0.05
∅ 1.98XL	1.98	±0.05	2.0~4.0	±0.05